

Doctrine for Everybody

**The Doctrine of
Humanity and Sin**

The Doctrine of Humanity & Sin

OCT

5

God's Picture

NOV

3

Being human

DEC

8

People Sinned

JAN

5

**Sin and
Consequences**

A full-page background image of a sunset over a body of water. The sky is filled with dramatic, colorful clouds in shades of blue, purple, orange, and yellow. The sun is low on the horizon, creating a bright reflection on the water's surface. The water is dark with shimmering highlights from the sunset. In the distance, a dark shoreline with trees and a small pier are visible.

**What is the most glorious
part of God's creation?**

PEOPLE!

(Psalm 8:3-9)

Goal of God's creation
Gen 1

In God's Image
Gen 1:26 | Jam 3:8-9

Representing God
Gen 1:28



**How you treat the picture
tells you what you think
about who it represents.**



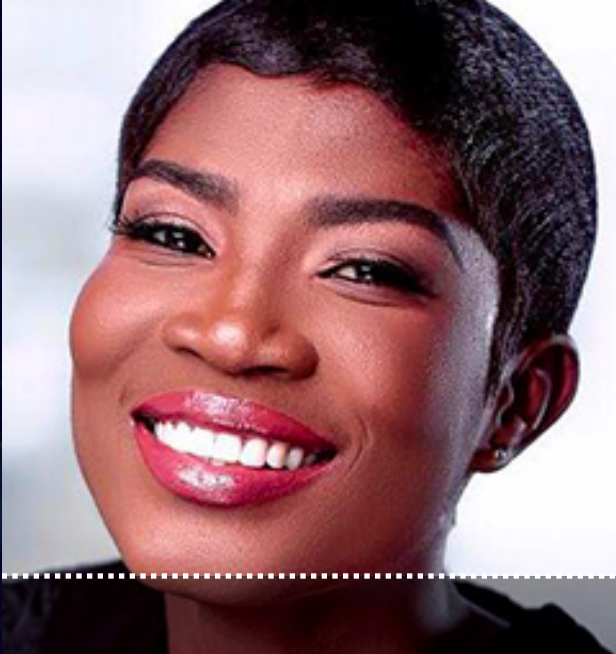
1

Be Amazed
and be
Humbled!
You are made
in God's
Image! So
value God!



2

Be Careful!
All people
beside you
are also.
made in God's
Image! So
value people!

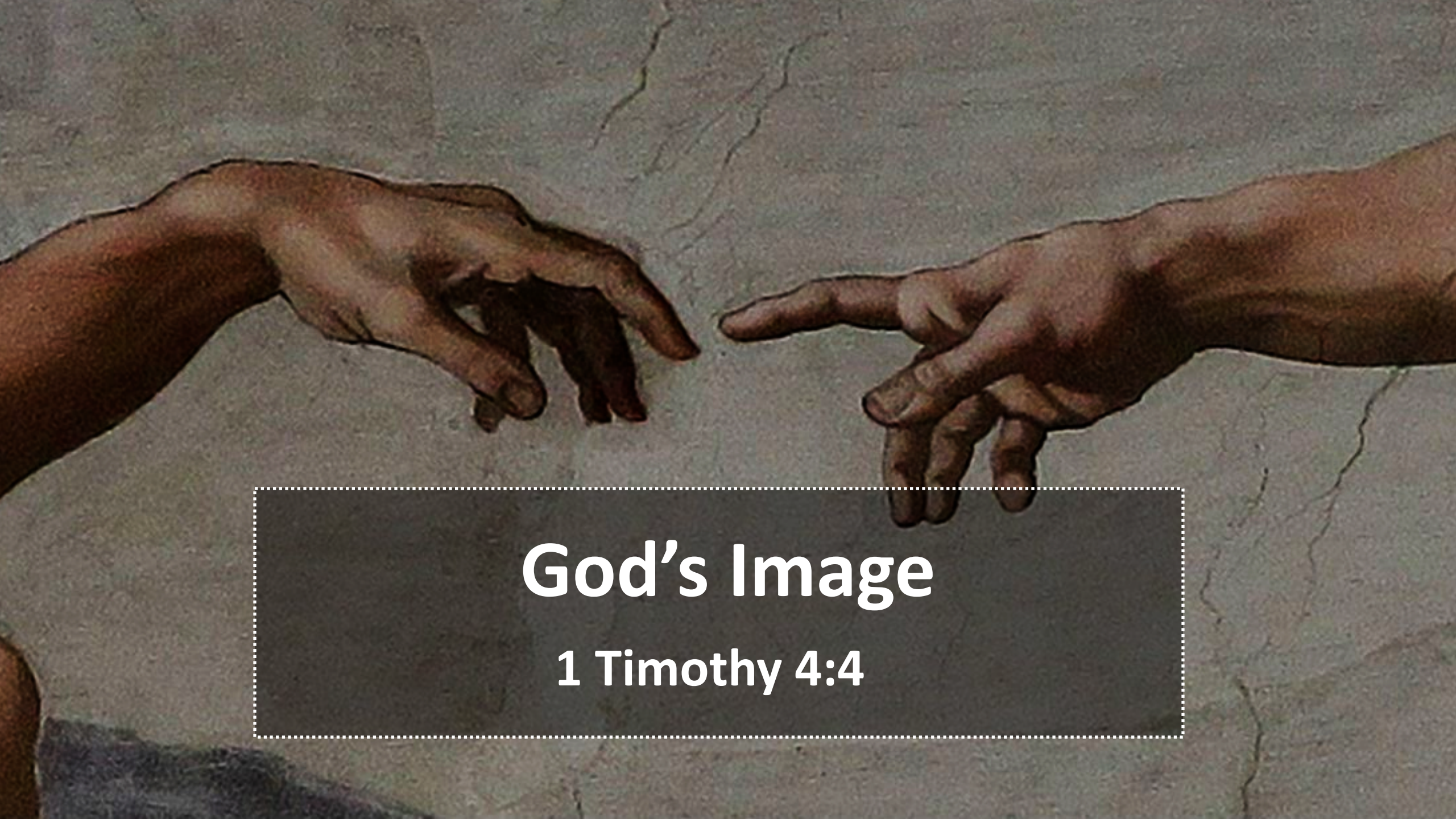


What is it to Be Human?





Which
ones
are
human
?



God's Image

1 Timothy 4:4

A wooden gavel with a curved head and a long handle rests on a matching wooden block. The background is a blurred courtroom with wooden paneling and rows of empty seats.

Must answer to God.

Hebrews 9:27

A large, diverse crowd of young people, mostly in their late teens or early twenties, are gathered at what appears to be a night festival or concert. Many individuals have their arms raised high, some with open palms, suggesting a moment of celebration or a shared experience. The crowd is dense, filling the frame from the foreground to the background. The lighting is warm and somewhat dim, typical of an outdoor night event. The people are wearing casual clothing like t-shirts, tank tops, and jeans. The overall atmosphere is one of joy and community.

Creatures. In Community.

Col 1:16 | Gen 2:18

A person wearing a bright green long-sleeved shirt and dark shorts is walking a tightrope. The rope is stretched between a large rock on the left and a point further away. The person is in the middle of the rope, with one arm raised for balance. The background shows a vast, hazy landscape under a clear blue sky, with a warm, golden light suggesting sunset or sunrise. The foreground consists of large, dark rocks.

Made Good. God's way.

Gen 1:31

A stylized, light green male figure with a circular head and a simple, rounded body, standing on the left side of the image.A stylized, red female figure with a circular head and a simple, rounded body, standing on the right side of the image.A vertical line of seven light green dots, evenly spaced, running down the center of the image.

Being Male and Female

Gen 1:27



Being a Body and Mind

Psalm 139:14 | 1 Cor 6:19-20

Spirt

Body

Soul

OR

Body

Soul or
Spirit or
Mind

Trichotomists say...

Father

Son

Spirit

Emotions
God-relates

Spirit

Body

Soul

Thinks

1 Thes 5:23 | Heb 4:12

Bible Says...

Father

Son

Spirit

Male

Female

...and the Bible Says...

- Soul / Spirit Thinks: Psalm 139:14 | 1 Cor 2:11
- Soul / Spirit Feels: Job 30:25 | Isaiah 54:6
- Soul / Spirit Departs: Psalm 94:17 | James 2:26
- Body/Soul/Spirit needs God: 2 Cor 7:1 | Heb 10:39
- Man has Five Parts? Luke 10:27

Don't deny the body!

...Berkhoff Says...

The tripartite conception of man originated in Greek philosophy, which conceived of the relation of the body and the spirit of man to each other after the analogy of the mutual relation between the material universe and God. It was thought that, just as the latter could enter into communion with each other only by means of a third substance or an intermediate being, so the former could enter into mutual vital relationships only by means of a third or intermediate element, namely, the soul.

The background is a complex pattern of overlapping arrows in various directions (up, down, left, right, and diagonally). The arrows are in shades of gray and black. Overlaid on this pattern are the words 'KNOWING', 'RIGHT', 'WRONG', and 'FROM' in a bold, sans-serif font. 'KNOWING' is at the top left, 'RIGHT' is to the right of it, 'WRONG' is at the bottom, and 'FROM' is on the left side, partially obscured by the central text.

KNOWING

RIGHT

Potential to Know Right from Wrong

Gen 3:5 | Rom 2:14-15 | Jonah 4:11

A painting of Superman in his classic blue suit with a red and yellow 'S' shield, flying over the Earth. His red cape is billowing behind him, and his right hand is raised in a 'V' for victory. The background shows the curvature of the Earth with blue oceans and white clouds against a dark sky.

Potential to...

Gen 2:12,15 | Gen 4:20,21,22



Potential to Give Thanks

Heb 13:15 | Ps 136:1-3

